



Putting Our Kids First

**PRESENTATION TO
LEADERSHIP TALLAHASSEE**

9.7.2023

CSC LEON MISSION & PRIORITIES

CSC Leon is a catalyst for positive change to improve the lives of children, youth and families in Leon County.



Success in School & Life



**Healthy Children, Youth
& Families**



**Stable & Nurturing Families
& Communities**

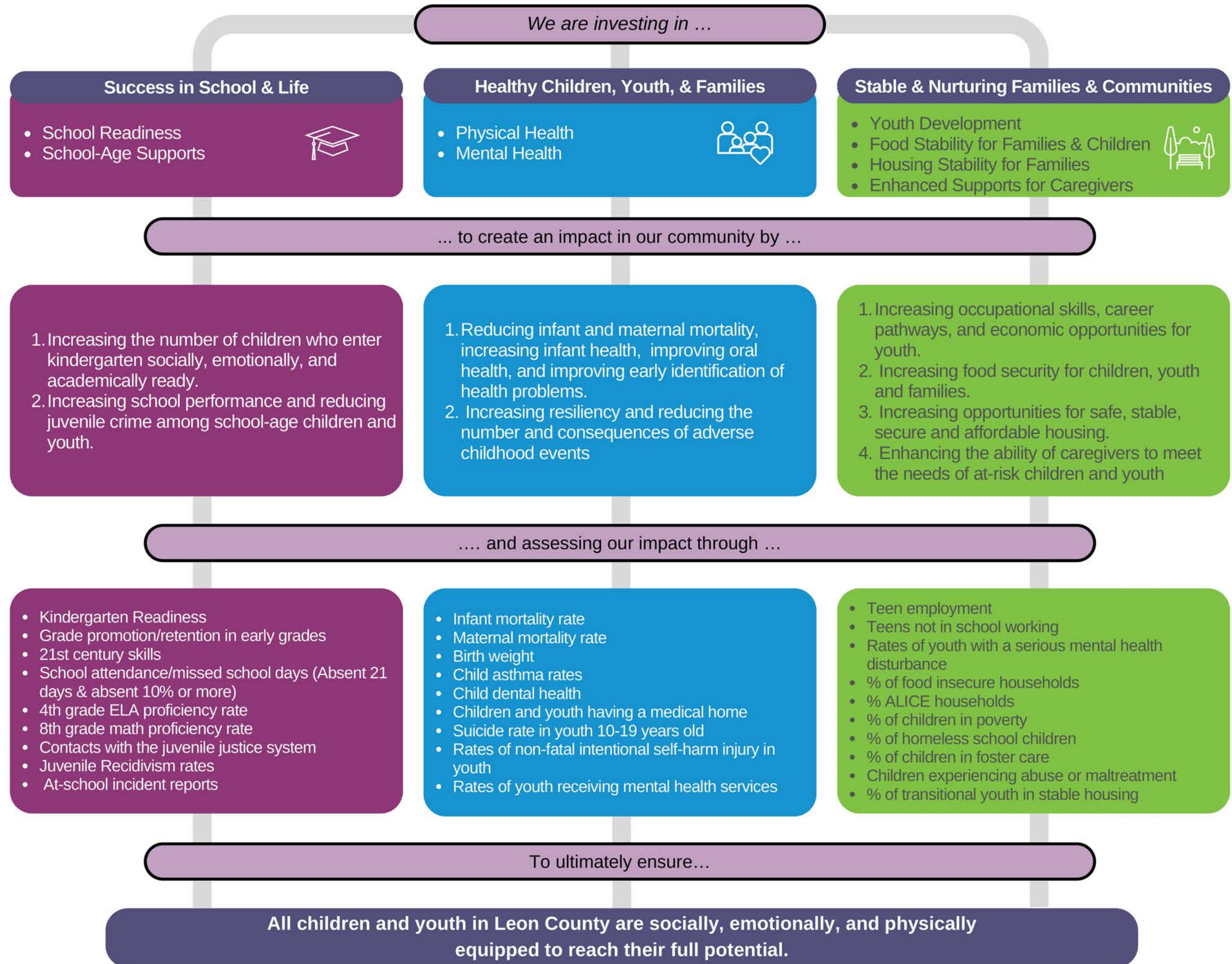
We provide dedicated funding to expand programs and access to family supports to ensure all children and youth are socially, emotionally, and physically equipped to reach their full potential.



Theory of Change

The Children's Services Council of Leon County (CSC Leon) is a catalyst for positive change to improve the lives and outcomes of children, youth and families in our community.

CSC Leon was approved by its community in November 2020 and established in May 2021 to provide children with early learning and reading skills, development, treatment, preventative and other children's services.



CSC LEON COUNCIL MEMBERS



Dr. Zandra Glenn
Chair
Community Resident



Terrence Watts
Vice Chair
DCF Appointee



Paul Mitchell
Treasurer
Community Resident



Atty. Carolyn Cummings
Leon County
Commissioner



Rocky Hanna
Superintendent of Schools



Darryl Jones
School Board Chair



Judge **Anthony Miller**
2nd Judicial Circuit



Mark O'Bryant
Community Resident

CSC LEON TEAM MEMBERS



Cecka Rose Green
Executive Director



Dina Snider
Director of Finance & Operations



Jacinta Clay
Administrative Services
Manager



Stephanie Eller Vaughn
Program Accountability
& Research Manager



Prisha Malone
Program Quality &
Accountability Specialist



Holly McPhail
Special Projects Manager

CSC LEON HISTORY

1

Nov, 2020

Leon County voters approve the formation of CSC Leon.

2

May, 2021

The Governing Council convenes for the first time.

3

Nov, 2021

Community Needs Assessment commences; First ad valorem taxes received.

4

Jan, 2022

Executive Director begins.

5

Apr, 2022

First Community Investment cycle begins.

6

Jun, 2022

First CSC Leon-funded services commence; Community Needs Assessment concludes.



CSC LEON HISTORY

7

Oct, 2022

Draft Strategic Framework to guide future investments presented.

8

Nov, 2022

2nd year of Ad Valorem taxes begin to arrive.

9

Feb, 2023

Second Community Investment cycle begins; CSC Leon opens Administrative Offices and Community Resource Room.

10

Mar, 2023

Capacity Building services commence; Third Community Investment Cycle begins.

11

May, 2023

First Innovative Funding project commences; Second round of CSC Leon-funded summer services commence; CSC Leon turns 2!

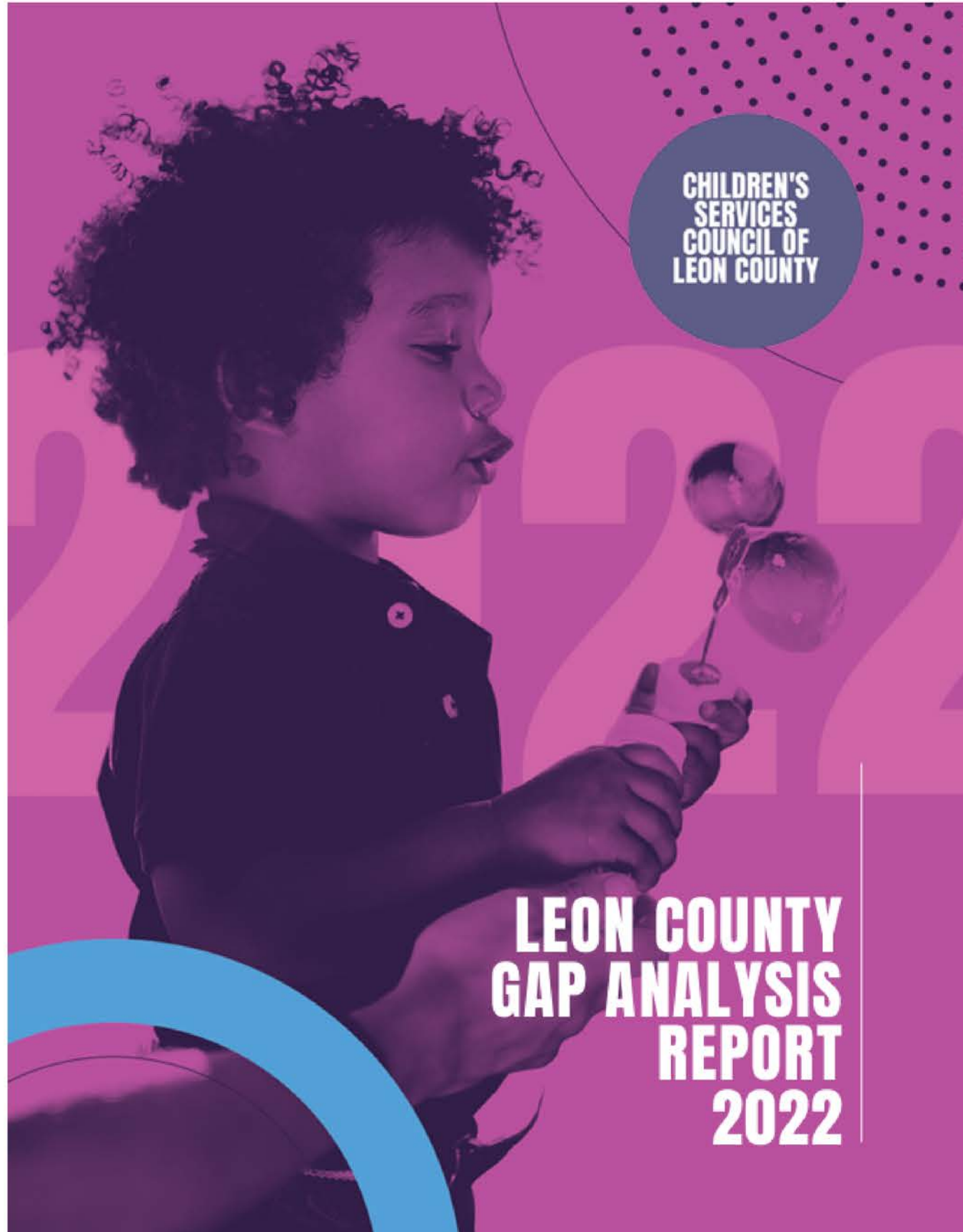
12

Aug, 2023

Second Innovative Funding project commences; First round of CSC Leon-funded priority services commence.



NEEDS ASSESSMENT - DATA



BASELINE

Success in School & Life

54% 3rd Grade Reading
50% Kindergarten Readiness
18.6/1,000 Juvenile Crime

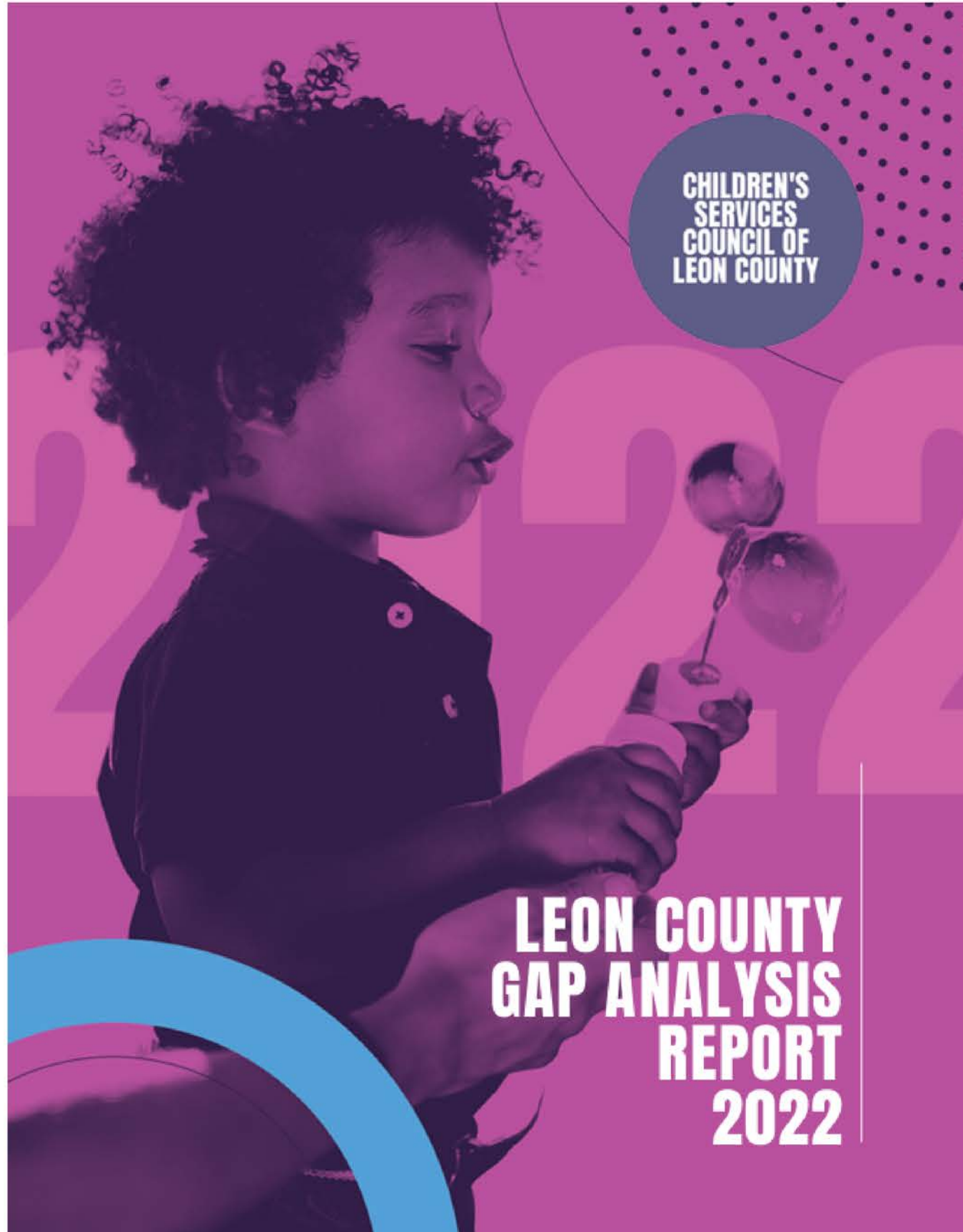
Healthy Children, Youth & Families

10.4% Low Birth Weight Babies
13.7% Self-Harm Among Youth
273.9/100,000 DV Incidence

Stable & Nurturing Families & Communities

15.9% Families in Poverty
17.3% Food Insecure Children
9.8% Youth Don't Feel Safe at School

NEEDS ASSESSMENT - DATA



BASELINE

BASELINE +1

Success in School & Life

54% 3rd Grade Reading
50% Kindergarten Readiness
18.6/1,000 Juvenile Crime

52% 3rd Grade Reading ↓
49% Kindergarten Readiness ↓
25.1/1,000 Juvenile Crime ↑

Healthy Children, Youth & Families

10.4% Low Birth Weight Babies
13.7% Self-Harm Among Youth
273.9/100,000 DV Incidence

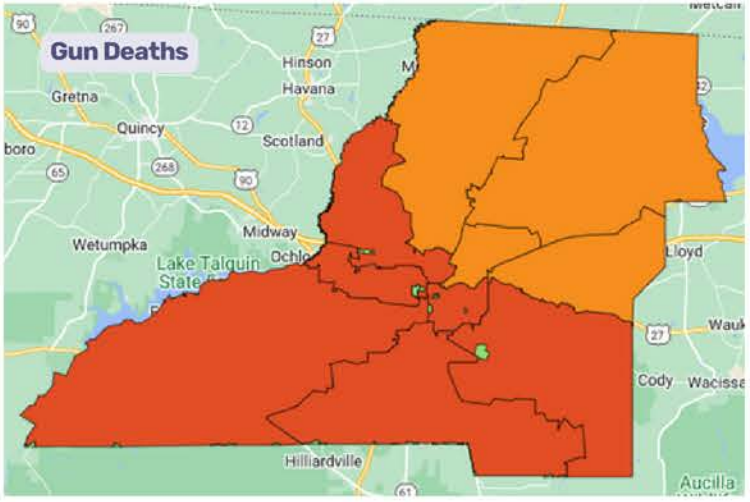
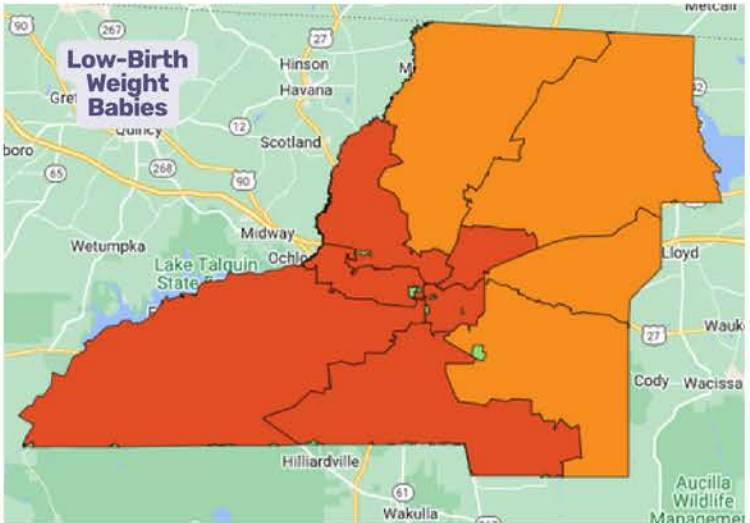
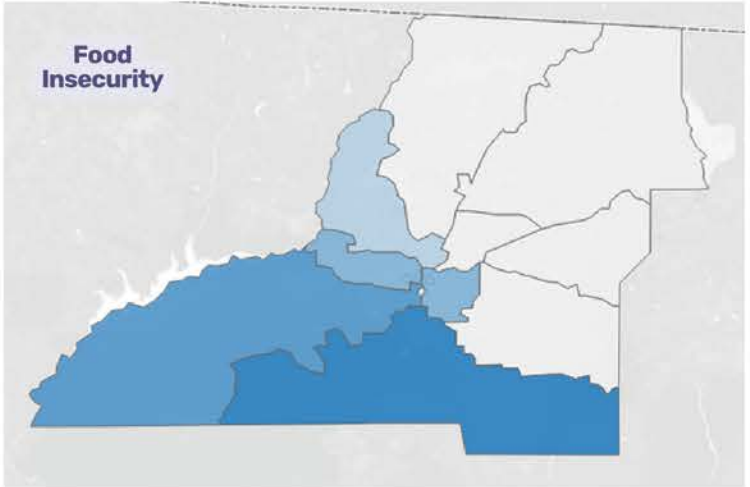
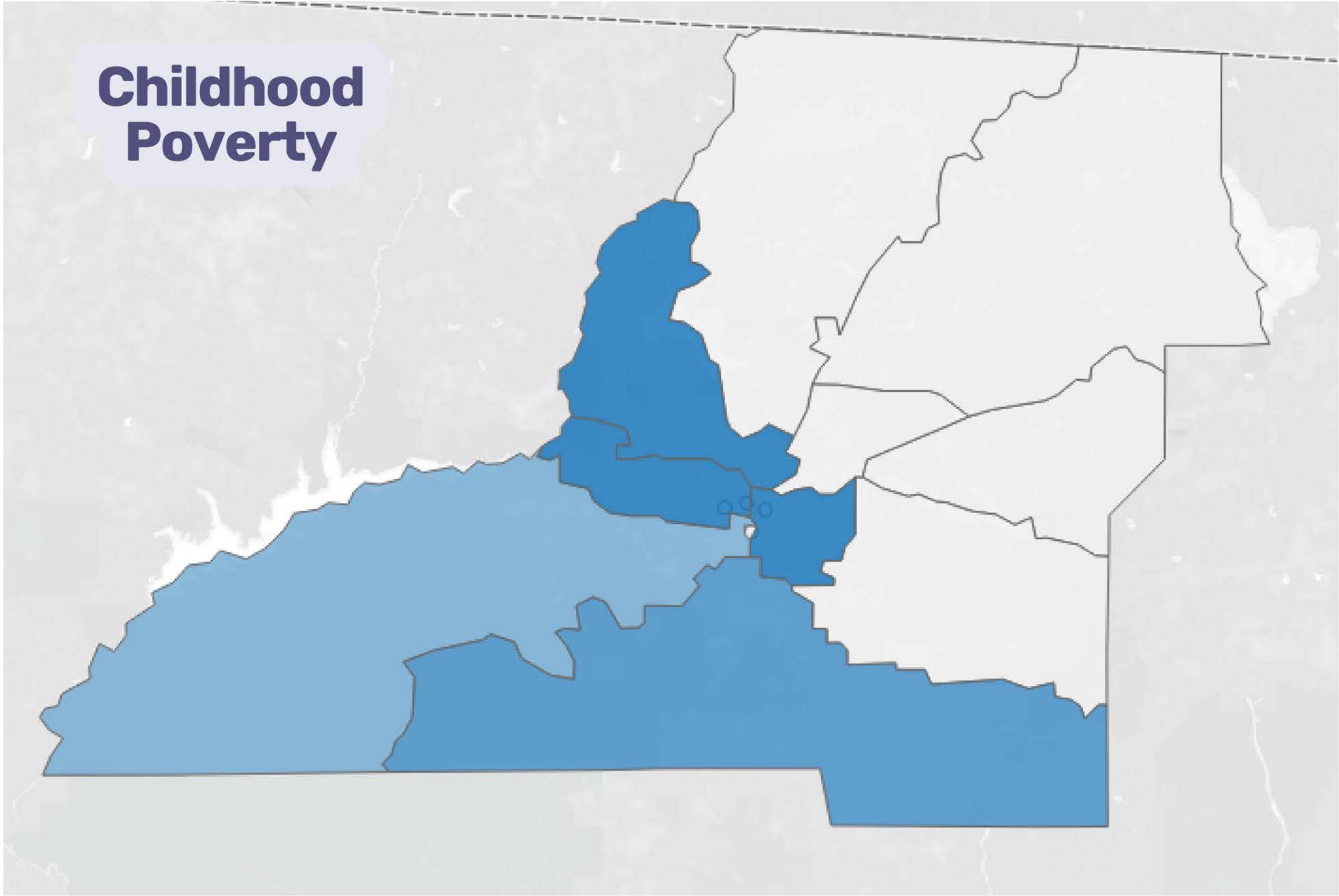
10.9% Low Birth Weight Babies ↑
15.0% Self-Harm Among Youth ↑
299.8/100,000 DV Incidence ↑

Stable & Nurturing Families & Communities

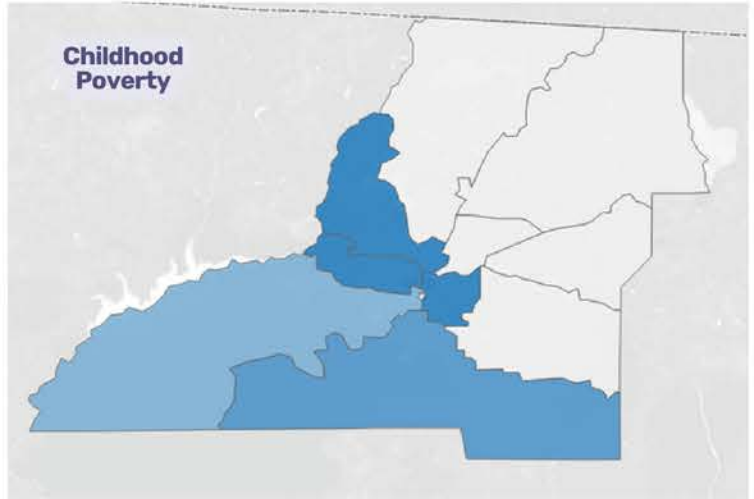
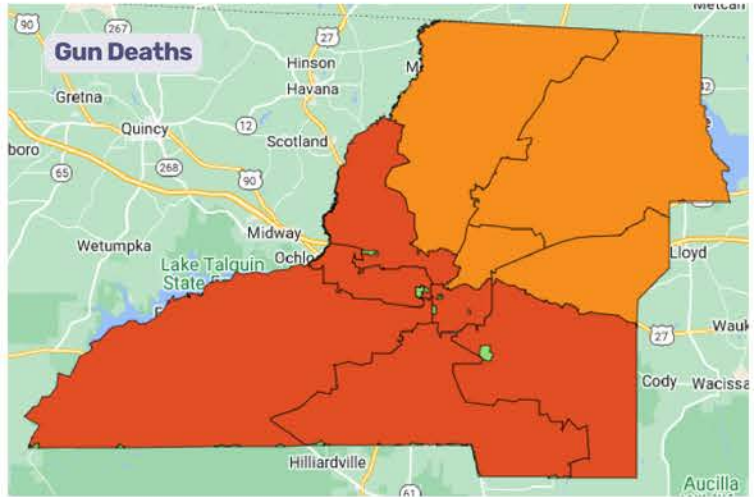
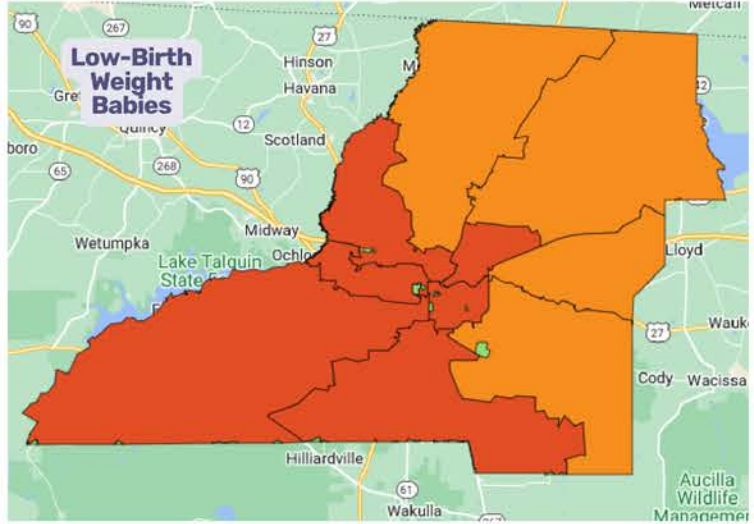
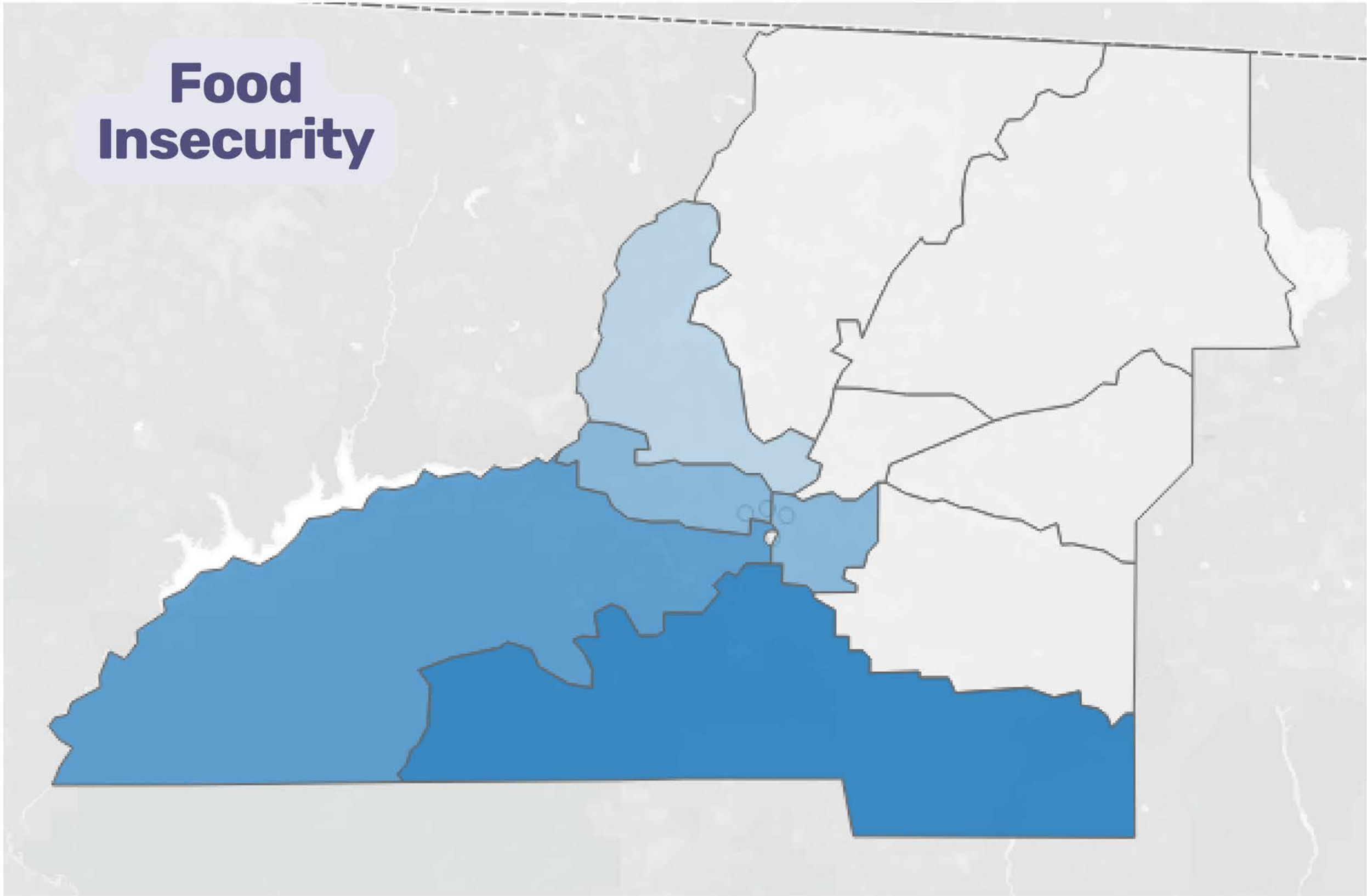
15.9% Families in Poverty
17.3% Food Insecure Children
9.8% Youth Don't Feel Safe at School

16.8% Families in Poverty ↑
15.6% Food Insecure Children ↓
11.9% Youth Don't Feel Safe at School ↑

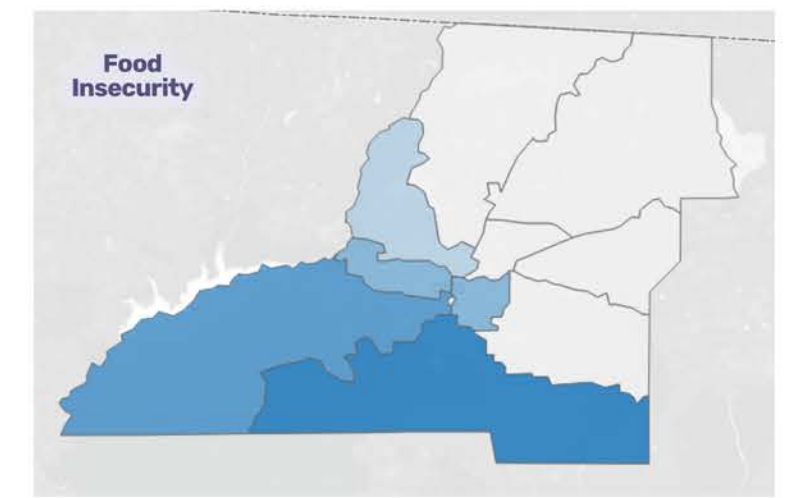
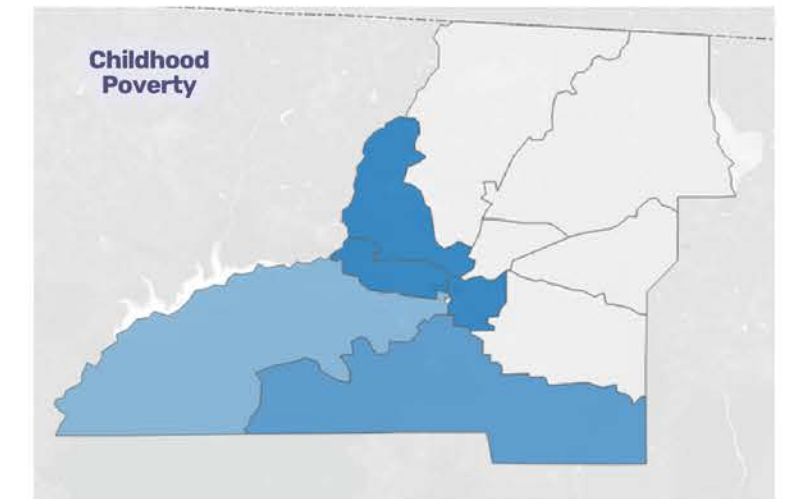
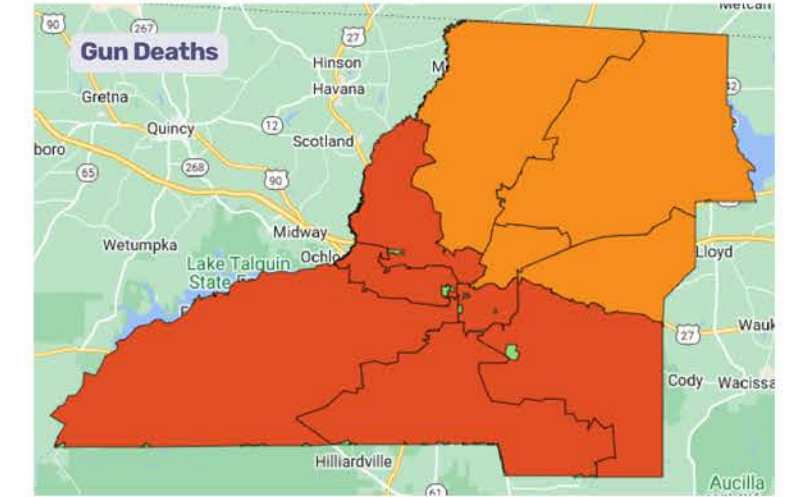
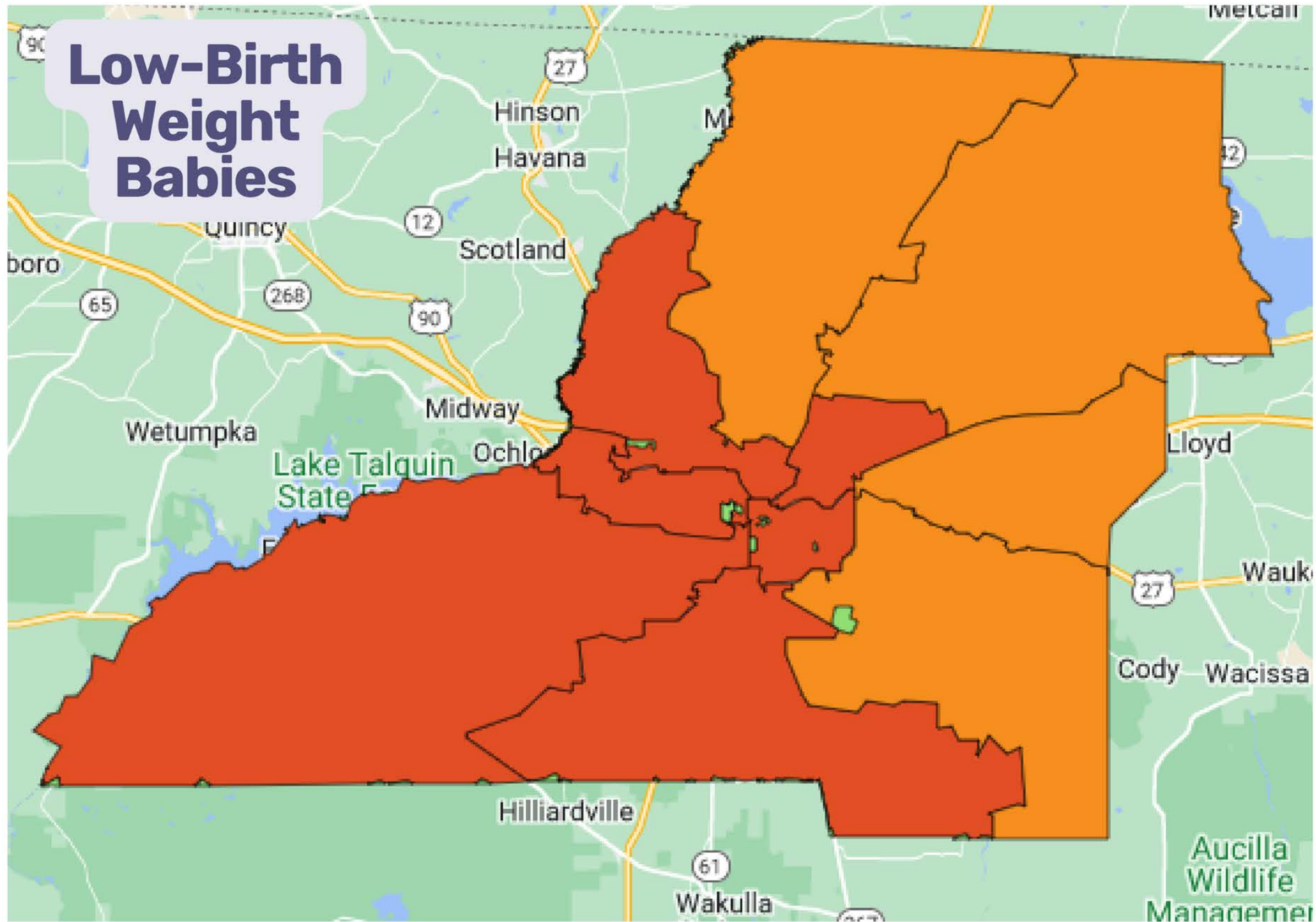
NEEDS ASSESSMENT - DATA



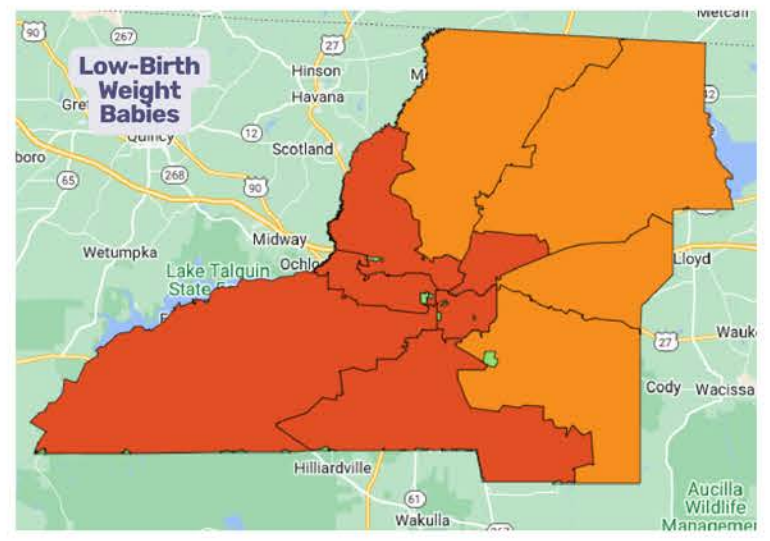
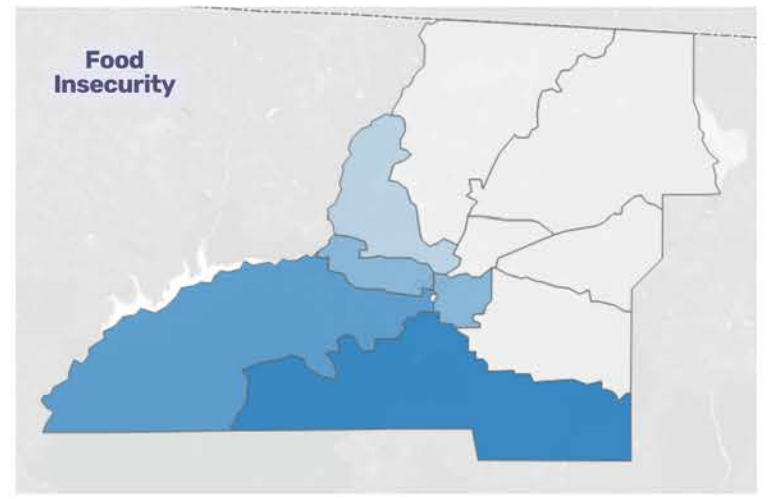
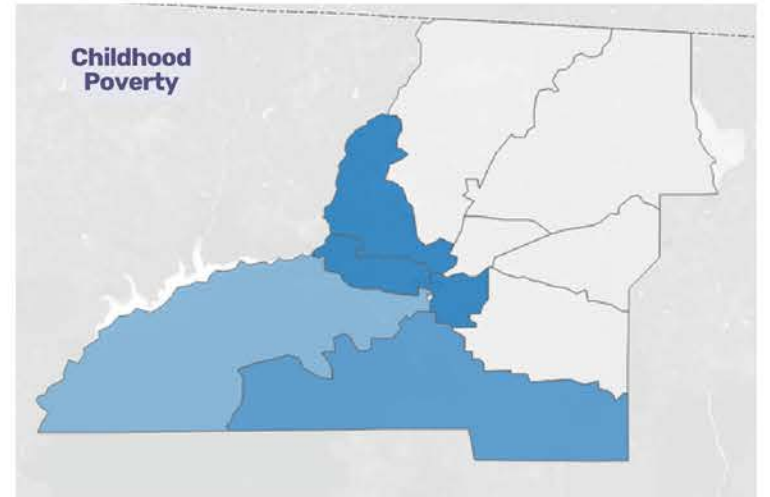
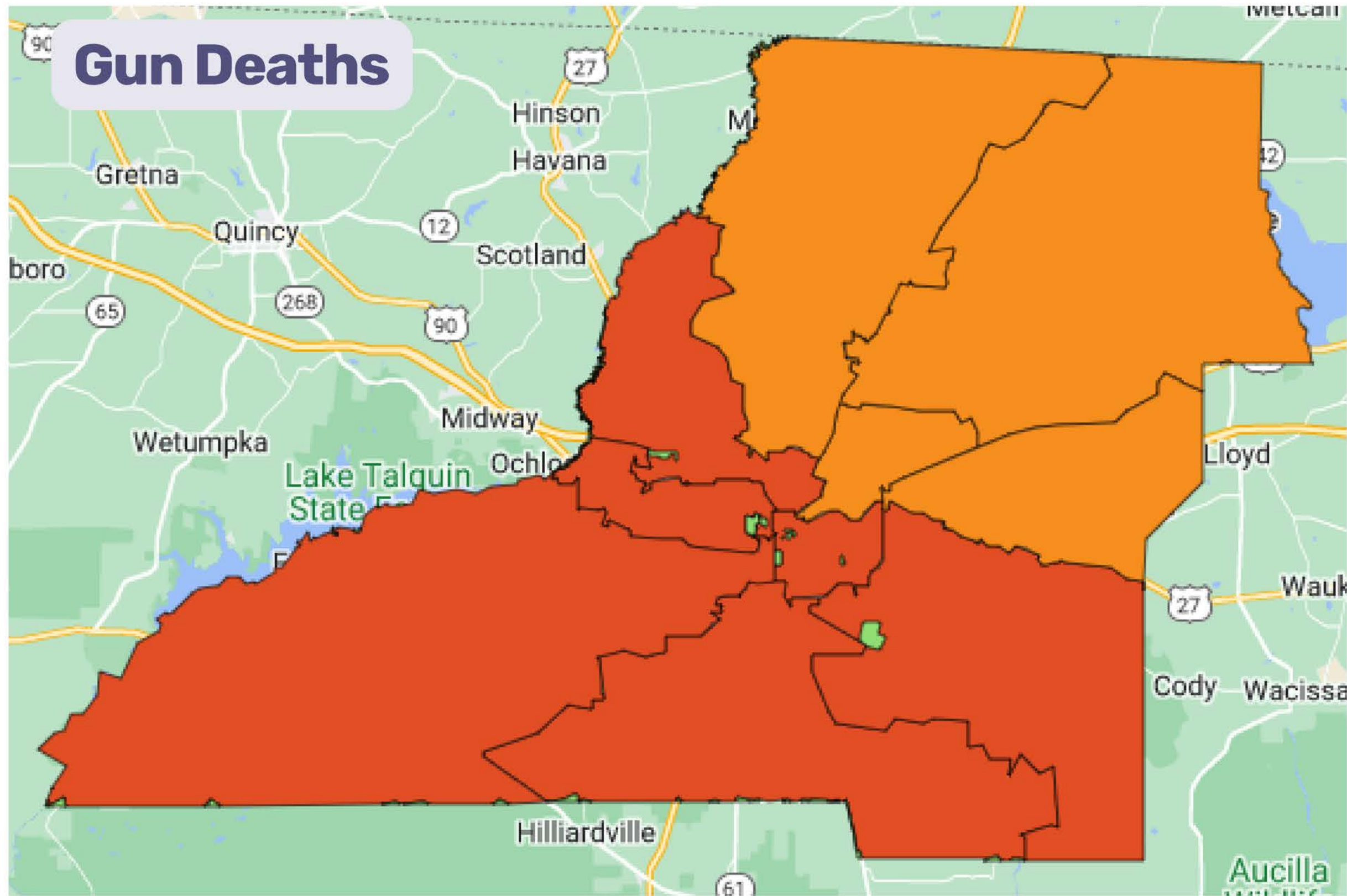
NEEDS ASSESSMENT - DATA

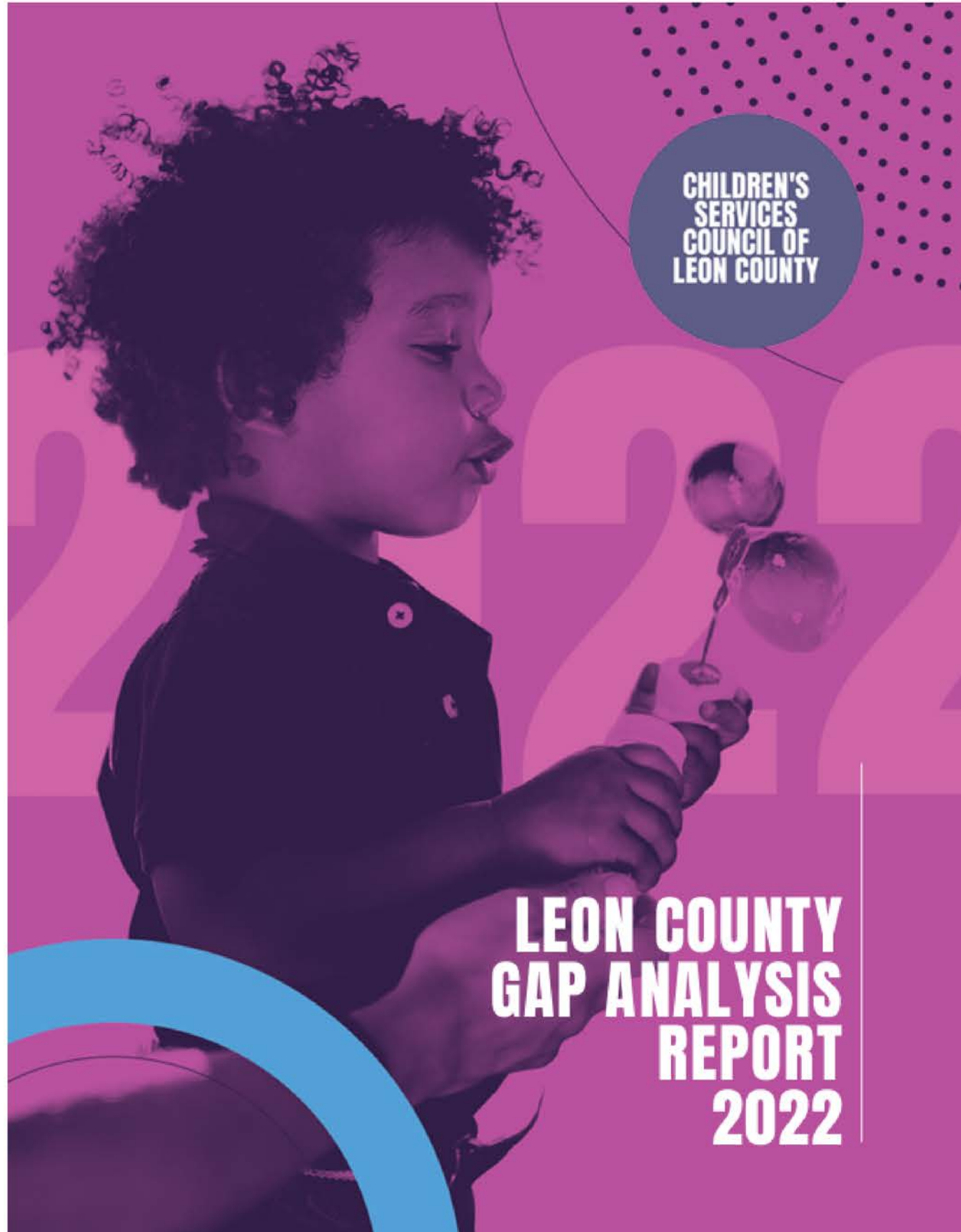


NEEDS ASSESSMENT - DATA



NEEDS ASSESSMENT - DATA





Recommendations

1. Focus on closing gaps through afterschool and summer programming
2. Foster collaboration among providers, funders, and the community
3. Provide strategic capacity building to providers
4. Target inequity through access to resources
5. Prioritize prevention and early intervention
6. Bring awareness to current resources
7. Leverage experts to address systemic issues impacting children, youth, and families in Leon County
8. Create a CSC Leon Youth Advisory Council to elevate youth voices
9. Bring awareness to CSC Leon's presence in the community

NEEDS ASSESSMENT – WHAT WE DID

Actions

1. Created a recurring funding type to support expanded learning opportunities during the summer; just completed second round; each year expectations and minimum standards increase
2. Formed “Trusted People” in partnership with neighborhood leaders, Leon County, City of Tallahassee, and United Way of the Big Bend
3. Contracted with strategic partners to provide capacity building services to grant seekers over the next 2 years; Created a recurring funding type to support small providers to build internal capacity
4. All services funded are required to target neighborhoods identified with the largest gaps (the maps!)
5. Majority of funded programs target families with children (0-12)
6. Working with 2-1-1 and other partners to ensure families know who to call when they need assistance; NOT reinventing the wheel
7. Regularly consult with providers and families through listening sessions, workshops and more to ensure we are moving in the right direction

Actions

8. CSC Leon Youth Advisory Council is tentatively planned for next year

9. Getting ready to launch a storytelling campaign in the coming months

and so much more!

TYPES OF INVESTMENTS

Priority Funding

- Long-term investment in evidence-based solutions that match clearly identified needs and expectations
- May require a stepped approach if capacity for evidenced-based programming does not yet exist
- Robust reporting requirements of client-level data; mandatory participation in CSC database

Success in School & Life



\$979,660

Healthy Children, Youth
& Families



\$1,257,560

Stable & Nurturing Families
& Communities



\$1,027,970



TYPES OF INVESTMENTS

Innovative Funding

- Investment in solutions(s) to address identified issue(s) using an innovative or promising practice
- CSC is a partner in the implementation and design of the solution
- Requires identification of a research question and securing the right evaluation partners to test the intervention/solution

Success in School & Life



\$695,200

Healthy Children, Youth
& Families

Stable & Nurturing Families
& Communities

TYPES OF INVESTMENTS

Summer (Bridge) Funding

- Short-term investments to bridge identified gaps during the summer months
- Modest expectations for outcome impact; increasing with each year
- Primarily expansion of existing programs

Success in School & Life



\$2,410,675

Healthy Children, Youth
& Families



\$211,160

Stable & Nurturing Families
& Communities



\$779,640



Capacity Building & Assessment

- (1) Partner engagement to provide training and supports designed to build the operating capacity of service providers to grow their readiness and competitiveness to respond to CSC investment opportunities
- (2) Limited-scope contracts for small investments to help support eligible nonprofits sustain, expand and build internal capacity to collect data and write reports (SIPS)
- (3) Internal evaluation and data management services

ACROSS ALL PROGRAMS



\$715,500

COMMITTED BUT NOT SOURCED (YET!)

Priority Funding

- Family Resource Center (FRC) Management - on schedule to release procurement in two weeks

Stable & Nurturing Families
& Communities



\$4,000,000

Capacity Building

- First round of SIPS applications will be determined next week

ACROSS ALL PROGRAMS



\$150,000

\$12,227,365 invested/encumbered
to directly improve the lives of
children, youth and families.



PLANNED BUT NOT PROMISED

Success in School & Life

- Non-traditional Childcare Expansion
- Family Child Home Supports for Licensing/Accreditation
- Benefit Cliff Abatement Program (FATES)
- INCENTIVE\$ Program Implementation
- Grade Level Reading Campaign
- 2024 Summer Camp and Academic Enrichment

PLANNED BUT NOT PROMISED

Healthy Children, Youth & Families

- Mobile Family Health Units (prenatal/postnatal supports)
- 2024 Summer Camp and Academic Enrichment for Children with Special Healthcare Needs
- Early Childhood Developmental Screening
- Behavioral Health Services Expansion
- Unintentional Injuries/Safety Campaign

PLANNED BUT NOT PROMISED

Stable & Nurturing Families & Communities

- 2024 Summer Youth Internship Program
- Neighborhood Empowerment "Trusted People" Continuation
- Family Resource Center and Services Expansion

GET ENGAGED!



www.cscleon.org

**2002 Old St Augustine Rd, Building A,
Suite 50, Tallahassee, FL 32301
+1.850.764.2966 | cgreen@cscleon.org**



