

**Children's Services Council
of Leon County**

ITN Evaluation Committee

October 7, 2021

www.cscleon.org

CHILDREN'S SERVICES COUNCIL OF LEON COUNTY

**Bryant
Miller
Olive**

**CHILDREN'S
SERVICES
COUNCIL OF
LEON COUNTY**

**Needs Assessment ITN
Evaluation Team Meeting**

October 7, 2021

www.bmolaw.com

ITN Evaluation Process Description

Evaluation Team members will independently evaluate Responses.

Scores will be aggregated and then reviewed by the Evaluation Team at a public meeting to reach consensus on a final ranking.



www.bmolaw.com

ITN Evaluation Process Description

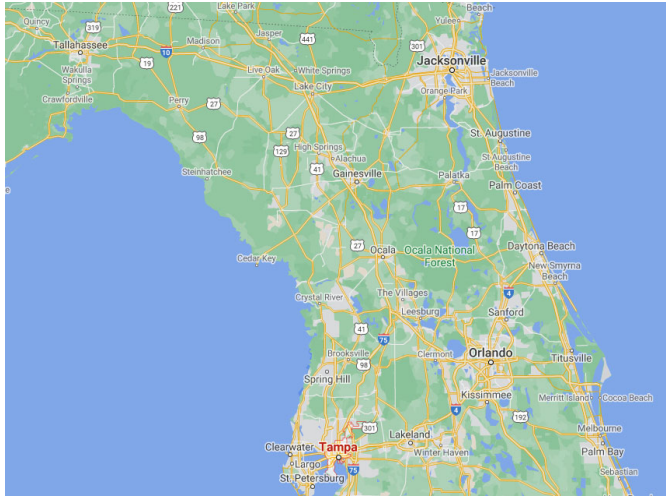
Based on its ranking, the Evaluation Team will establish a competitive range of Responses reasonably susceptible of award.

The Evaluation Team will then decide which one or more Respondents in that range will advance to the negotiation phase.



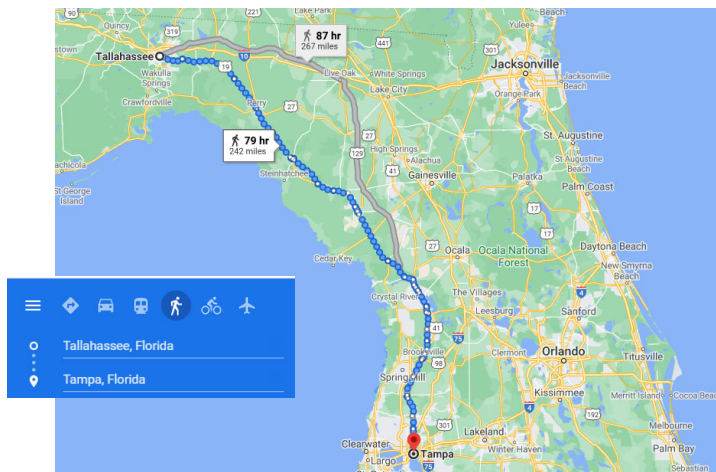
www.bmolaw.com

Example – getting to Tampa



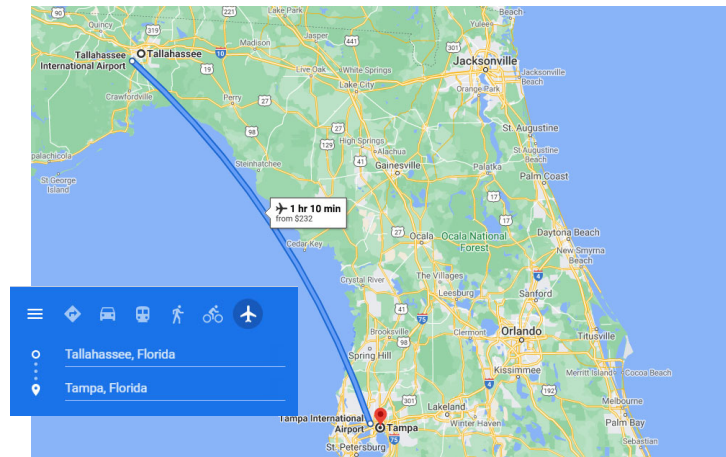
www.bmolaw.com

Walking is not competitive



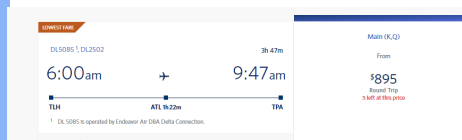
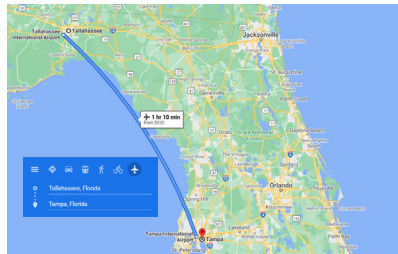
www.bmolaw.com

How about flying?



www.bmolaw.com

How to Fly?



Total private charter airfare between Tallahassee International Airport and Tampa International Airport ranges from \$3614 to \$24269 for the price for the entire charter plane (price per person is based on the number of passengers entered above). Flight duration ranges from depending on the aircraft.



Air Taxi

Cessna 182 Skyplane or similar

Flight Duration: 1h 24m
Max. Passengers: 3

\$3614

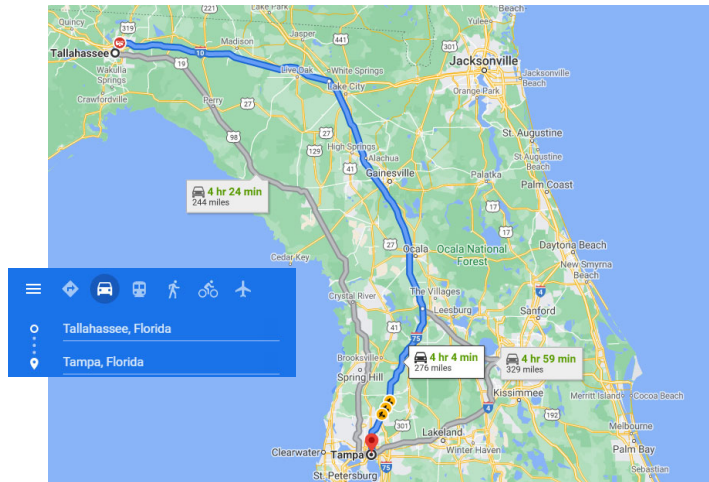
\$3614 per person

Select Flight

Quoted by FAA #10430222

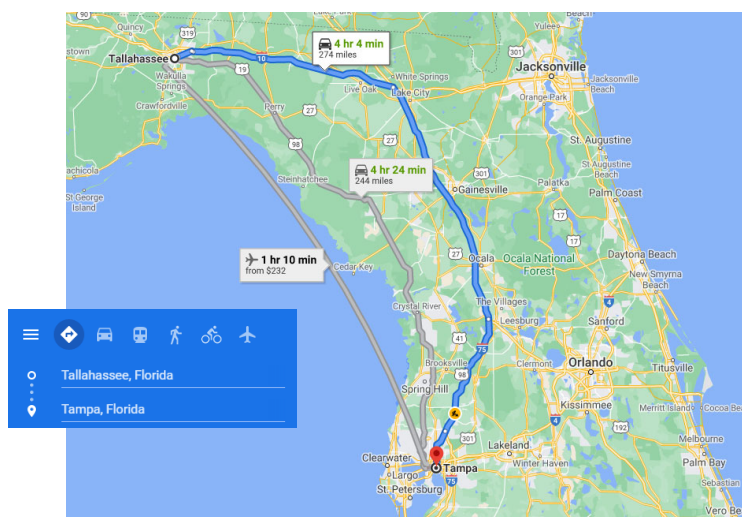
www.bmolaw.com

Afraid of Flying?



www.bmolaw.com

“Recommended Travel Mode”



www.bmolaw.com

We are not going to Tampa

EXHIBIT I – DRAFT STATEMENT OF WORK

A. Purpose

The purpose of the Contract is to provide quantifiable information necessary for CSC Leon to prioritize funding for preventive, developmental, treatment, rehabilitative and other services to children, youth and parents.

Specifically, the goals are to identify:

1. key outcomes for each priority area, how those key outcomes should be measured, and what the short-, mid-, and long-term expectations should be;
2. current and multi-year disaggregated data (e.g., race, sex, age, county, school, census tracts, etc., as available) for each key outcome;
3. current programs and services in Leon County using effective and other practices and any demonstrated results related to key outcomes;
4. current programs and services in Florida, nationally and internationally using effective and other practices and any demonstrated results related to key outcomes; and
5. expedited and regular funding options for new or existing programs and services that target key outcomes with evidence-based practices or promising innovative interventions. Innovative interventions include, but are not limited to, investment in public relations campaigns, prizes to incentivize change, use of technology (web portals, artificial intelligence), incentives to small businesses, grants to nonprofits, and use of funds to leverage greater resources (e.g., matching funds for other funding streams, social impact bonds, etc.), and use of volunteers.

www.bmolaw.com

You Narrow It Down for the Negotiation Team, Which Will:

Formulate by consensus a recommendation of award that will provide the best value to CSC Leon based on the following selection criteria:

- Demonstration of prior relevant experience and the overall professional experience at providing the proposed services
- Ability and approach to meeting the ITN goals
- Ability and approach to providing the proposed services
- Pricing

www.bmolaw.com

Best Value

"Best value" means the expected outcome of the contract that, in the Negotiation Team's estimation, provides the greatest overall benefit in response to the ITN requirements.

EXHIBIT I – DRAFT STATEMENT OF WORK

A. Purpose

The purpose of the Contract is to provide quantifiable information necessary for CSC Leon to prioritize funding for preventive, developmental, treatment, rehabilitative and other services to children, youth and parents.

www.bmolaw.com

The Goal of This Meeting

Based on its ranking, the Evaluation Team will establish a competitive range of Responses reasonably susceptible of award.

The Evaluation Team will then decide which one or more Respondents in that range will advance to the negotiation phase.

www.bmolaw.com

Children's Services Council of Leon County

ITN Evaluation Committee

October 7, 2021

www.cscleon.org

CHILDREN'S SERVICES COUNCIL OF LEON COUNTY

Aggregate Scores

Respondent	Total Score
Public Consulting Group	410
George Washington	394
Q-Q Research	385
Downs/St. Germain	371
NLP Logix	356
Knowli Data Science	317
Forefront	314
KPMG	314

Observations

- 96 point spread
- 2-3 tiers
- 16-9-14-15-39

Aggregate Scores

Respondent	Service Desc.	Spec. Expertise
Public Consulting Group	189	80
George Washington	174	78
Q-Q Research	167	84
Downs/St. Germain	169	74
NLP Logix	148	78
Knowli Data Science	123	64
Forefront	131	65
KPMG	133	62

Observations

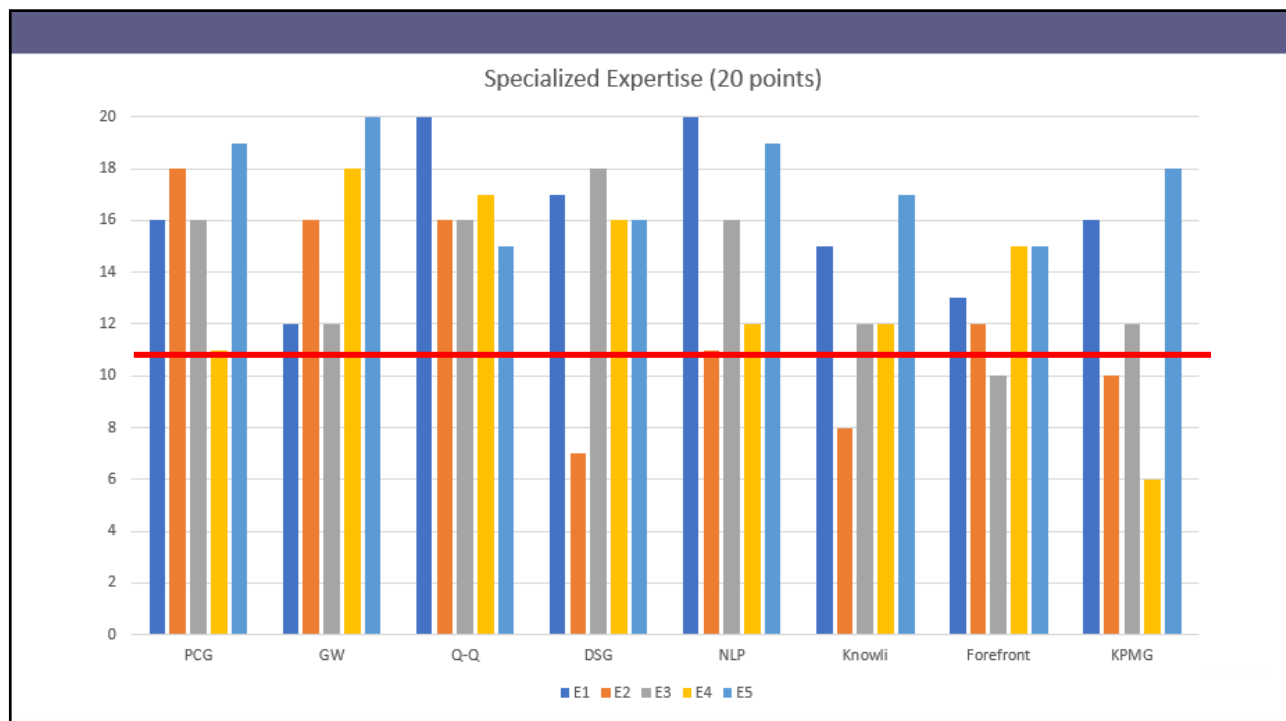
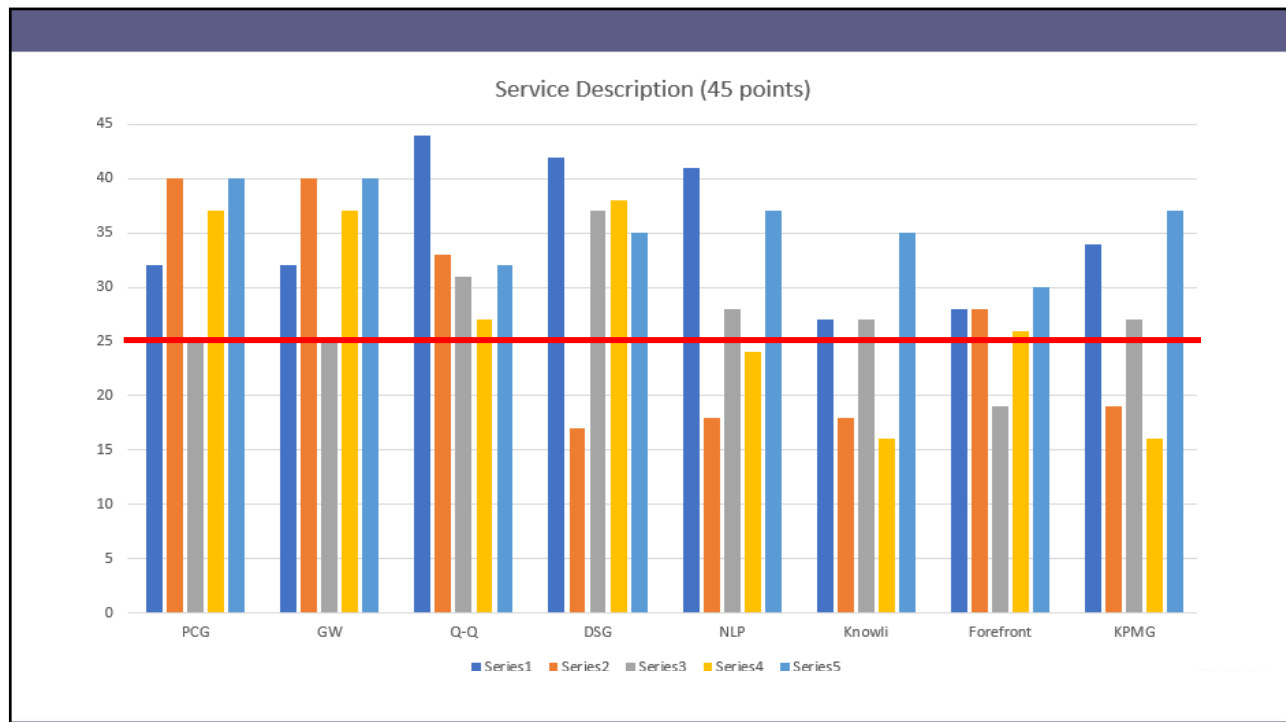
- 66/22 point spread
- 2-3 tiers

Individual Scores

Respondent	Highest	Lowest
Public Consulting Group	2	0
George Washington	1	0
Q-Q Research	1	0
Downs/St. Germain	1	1
NLP Logix	0	0
Knowli Data Science	0	0
Forefront	0	3
KPMG	0	1

Observations

- Natural tiering
- Wildcard?



Aggregate Scores

Respondent	Total Score
Public Consulting Group	410
George Washington	394
Q-Q Research	385
Downs/St. Germain	371
NLP Logix	356
Knowli Data Science	317
Forefront	314
KPMG	314

Observations

- 96 point spread
- 2-3 tiers
- 16-9-14-15-39

**Children's Services Council
of Leon County**

ITN Evaluation Committee

October 7, 2021